

BUILDING APPROVALS

AUSTRALIA

EMBARGO: 11:30AM (CANBERRA TIME) TUES 5 MAY 1998

MARCH KEY FIGURES

TREND ESTIMATES

	Mar 1998	% change Feb 1998 to Mar 1998	% change Mar 1997 to Mar 1998
Dwelling units approved			
Private sector houses	9 168	1.3	15.9
Total dwelling units	13 461	0.9	12.7

SEASONALLY ADJUSTED

	Mar 1998	% change Feb 1998 to Mar 1998	% change Mar 1997 to Mar 1998
Dwelling units approved			
Private sector houses	9 249	4.2	11.8
Total dwelling units	13 739	9.8	12.7

MARCH KEY POINTS

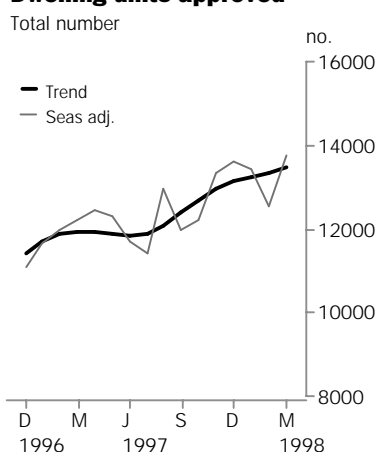
TREND ESTIMATES

- The trend for private sector houses has increased by 1.3% in March and 15.9% over the last year.
- The trend for other dwelling units has been relatively flat over the last four months but has increased by 6.4% over the last year.
- The trend for total dwelling units has increased by 12.7% over the last year although there was a relatively flat period in the first half of 1997. Growth occurred in March in New South Wales (0.8%), Victoria (1.7%), South Australia (4.2%), Western Australia (1.7%) and the Northern Territory (1.8%).
- The trend for the value of non-residential building has increased by 8.6% over the last three months and is 21.8% above the level of a year ago.

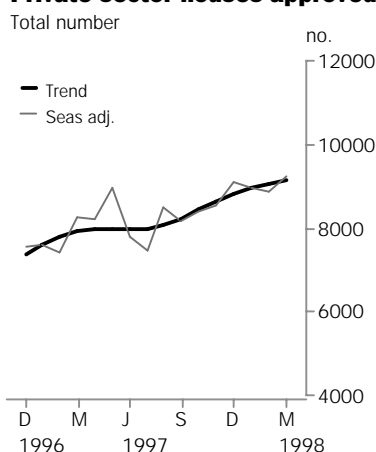
SEASONALLY ADJUSTED ESTIMATES

- The seasonally adjusted estimate of private sector houses rose by 4.2% in March following decreases in the previous two months.
- The seasonally adjusted estimate for other dwelling units rose by 24.4% following a fall of 19.6% in the previous month.

Dwelling units approved



Private sector houses approved



- For further information about these statistics, contact Richard Mason on 08 8237 7663, or for information about related unpublished statistics see page 27 of this publication.

NOTES

FORTHCOMING ISSUES

<i>ISSUE</i>	<i>RELEASE DATE</i>
April 1998	2 June 1998
May 1998	1 July 1998
June 1998	30 July 1998
July 1998	1 September 1998
August 1998	30 September 1998
September 1998	2 November 1998



CHANGES IN THIS ISSUE

There are no changes in this issue.



DATA NOTES

There are no notes about the data for this issue.



SIGNIFICANT REVISIONS THIS MONTH

There are no significant revisions this month.

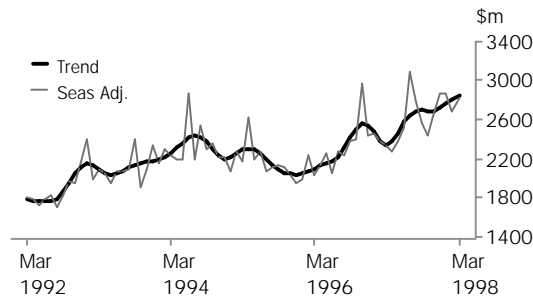


W. McLennan
Australian Statistician

VALUE OF BUILDING APPROVED

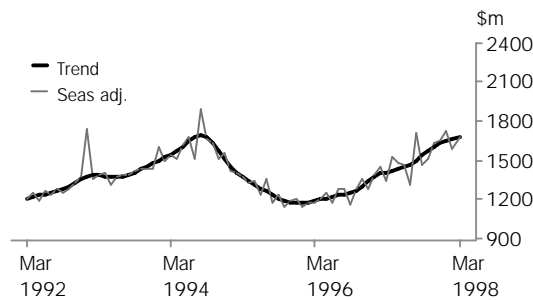
VALUE OF TOTAL BUILDING

The trend increased for the fifth consecutive month and is 21.6% above the level of a year ago. Growth will continue unless the seasonally adjusted estimate for April falls by more than 4.2% (the average monthly movement is 8.7%).



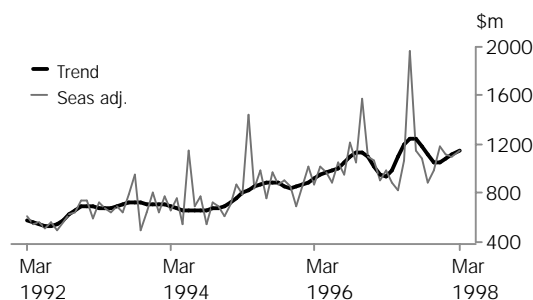
VALUE OF RESIDENTIAL BUILDING

The trend has increased steadily since early 1996 and has shown growth of 19.0% over the last year. Growth will continue unless the seasonally adjusted estimate for April falls by more than 3.8% (the average monthly movement is 5.3%).



VALUE OF NON-RESIDENTIAL BUILDING

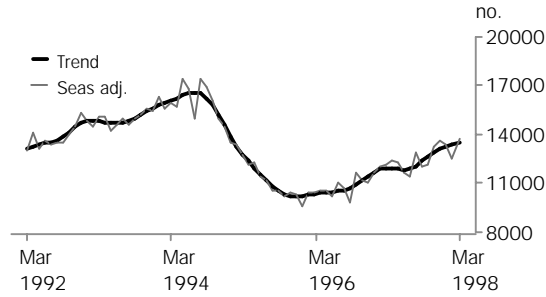
The trend has grown strongly since late 1994 but is showing considerable volatility over the last year. Growth will continue unless the seasonally adjusted estimate for April falls by more than 10.5% (the average monthly movement is 20.5%).



DWELLINGS APPROVED

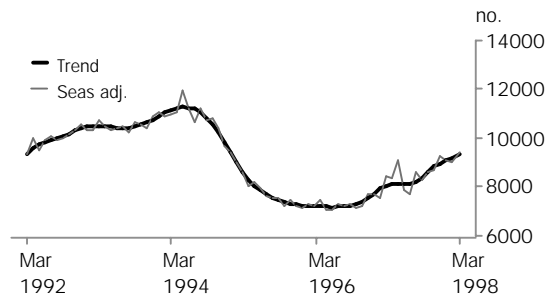
DWELLING UNITS APPROVED

The trend has been increasing since early 1996. The series is now 12.7% higher than it was in March 1997 and this in turn was 15.2% higher than March 1996.



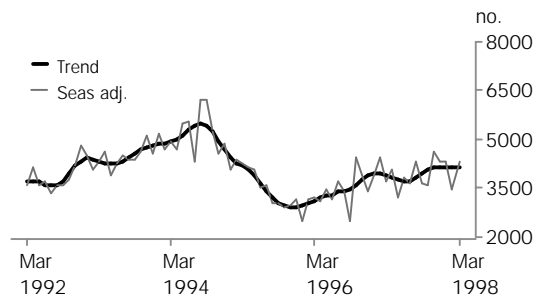
PRIVATE SECTOR HOUSES APPROVED

The trend for private sector houses has shown strong growth since July 1996 apart from the relatively flat period from April to July 1997. It is 15.9% higher than at the same time last year.



OTHER DWELLINGS(a) APPROVED

The seasonally adjusted estimate for March increased by 24.4% offsetting the impact of the large fall in February. Consequently the trend is now showing a relatively flat period from December 1997 to March 1998. However the trend has still grown by 6.4% over the last year.



(a) See Glossary for definition.

WHAT IF...? REVISIONS TO TREND ESTIMATES

EFFECT OF NEW SEASONALLY ADJUSTED ESTIMATES ON TREND ESTIMATES

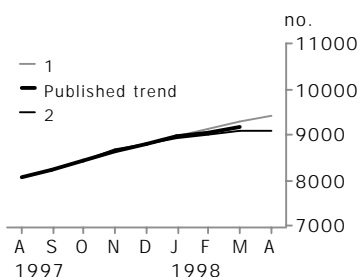
Readers should exercise care when interpreting trend estimates. The last six trend estimates, in particular, are likely to be revised when new seasonally adjusted estimates become available.

TREND REVISIONS

Generally, the greater the volatility of the original series, the larger the size of the revisions to trend estimates. Analysis of the building approval original series has shown that they can be revised substantially. As a result, some months can elapse before turning points in the trend series are reliably identified.

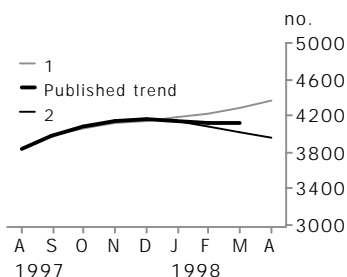
The graphs and tables which follow present the effect of two possible scenarios on the previous trend estimates: that the April seasonally adjusted estimate is higher than the March estimate by 3% for the number of private sector houses approved and 10% for other dwelling units approved; and that the April seasonally adjusted estimate is lower than the March estimate by 3% for the number of private sector houses approved and 10% for other dwelling units approved. These percentages were chosen because they represent the average absolute monthly percentage change for these series over the last ten years.

PRIVATE SECTOR HOUSES



	WHAT IF NEXT MONTH'S SEASONALLY ADJUSTED ESTIMATE:					
	TREND AS PUBLISHED		1 <i>rises by 3% on Mar 1998</i>	2 <i>falls by 3% on Mar 1998</i>		
	<i>no.</i>	<i>% change</i>	<i>no.</i>	<i>% change</i>	<i>no.</i>	<i>% change</i>
November 1997	8 642	2.4	8 631	2.4	8 656	2.5
December 1997	8 805	1.9	8 801	2.0	8 813	1.8
January 1998	8 943	1.6	8 955	1.8	8 922	1.2
February 1998	9 053	1.2	9 115	1.8	9 005	0.9
March 1998	9 168	1.3	9 272	1.7	9 066	0.7
April 1998	—	—	9 398	1.4	9 086	0.2

OTHER DWELLINGS(a)



	WHAT IF NEXT MONTH'S SEASONALLY ADJUSTED ESTIMATE:					
	TREND AS PUBLISHED		1 <i>rises by 10% on Mar 1998</i>	2 <i>falls by 10% on Mar 1998</i>		
	<i>no.</i>	<i>% change</i>	<i>no.</i>	<i>% change</i>	<i>no.</i>	<i>% change</i>
November 1997	4 134	1.4	4 117	1.2	4 149	1.6
December 1997	4 154	0.5	4 144	0.6	4 160	0.3
January 1998	4 151	-0.1	4 178	0.8	4 136	-0.6
February 1998	4 126	-0.6	4 225	1.1	4 085	-1.2
March 1998	4 128	0.1	4 295	1.7	4 030	-1.3
April 1998	—	—	4 360	1.5	3 960	-1.7

(a) See Glossary for definition.

DWELLING UNITS APPROVED

Month	HOUSES.....		OTHER DWELLINGS(a).....		TOTAL DWELLING UNITS.....		
	Private sector	Total	Private sector	Total	Private sector	Public sector	Total
	no.	no.	no.	no.	no.	no.	no.
ORIGINAL							
1997							
January	6 334	6 462	3 247	3 598	9 581	479	10 060
February	6 676	6 814	4 015	4 319	10 691	442	11 133
March	7 281	7 493	3 291	3 508	10 572	429	11 001
April	8 485	8 685	3 466	3 694	11 951	428	12 379
May	9 595	9 726	3 696	3 897	13 291	332	13 623
June	7 732	7 903	3 315	3 674	11 047	530	11 577
July	8 488	8 667	3 938	4 091	12 426	332	12 758
August	8 727	8 859	4 155	4 390	12 882	367	13 249
September	9 094	9 244	3 629	3 825	12 723	346	13 069
October	9 055	9 212	3 328	3 479	12 383	308	12 691
November	8 468	8 638	4 262	4 439	12 730	347	13 077
December	8 286	8 449	3 734	4 005	12 020	434	12 454
1998							
January	7 277	7 414	3 556	3 727	10 833	308	11 141
February	8 012	8 172	3 161	3 398	11 173	397	11 570
March	9 559	9 754	3 759	4 089	13 318	525	13 843
SEASONALLY ADJUSTED							
1997							
January	7 580	7 718	3 602	3 925	11 182	460	11 642
February	7 399	7 544	4 124	4 440	11 523	461	11 984
March	8 269	8 454	3 509	3 736	11 778	412	12 190
April	8 231	8 396	3 818	4 059	12 049	406	12 455
May	8 977	9 103	3 031	3 208	12 008	303	12 311
June	7 780	7 890	3 657	3 817	11 437	270	11 707
July	7 453	7 746	3 513	3 667	10 967	446	11 413
August	8 498	8 639	4 036	4 314	12 534	419	12 953
September	8 164	8 324	3 242	3 668	11 406	586	11 992
October	8 392	8 596	3 441	3 618	11 834	380	12 214
November	8 523	8 686	4 406	4 635	12 929	392	13 321
December	9 097	9 285	3 971	4 346	13 068	562	13 630
1998							
January	8 953	9 103	4 164	4 318	13 117	303	13 421
February	8 877	9 043	3 226	3 473	12 103	414	12 517
March	9 249	9 419	3 972	4 320	13 221	518	13 739
TREND ESTIMATES							
1997							
January	7 593	7 738	3 636	3 962	11 229	471	11 700
February	7 781	7 928	3 660	3 953	11 441	440	11 881
March	7 910	8 061	3 633	3 880	11 544	397	11 941
April	7 966	8 122	3 598	3 810	11 564	368	11 932
May	7 969	8 132	3 565	3 761	11 533	360	11 893
June	7 955	8 125	3 521	3 720	11 476	368	11 844
July	7 973	8 148	3 516	3 735	11 489	394	11 883
August	8 059	8 240	3 594	3 839	11 653	426	12 079
September	8 224	8 407	3 706	3 973	11 931	449	12 379
October	8 440	8 621	3 803	4 077	12 243	454	12 698
November	8 642	8 817	3 863	4 134	12 505	445	12 950
December	8 805	8 975	3 891	4 154	12 696	433	13 129
1998							
January	8 943	9 111	3 890	4 151	12 833	429	13 262
February	9 053	9 221	3 862	4 126	12 915	432	13 347
March	9 168	9 333	3 858	4 128	13 026	434	13 461

(a) See Glossary for definition.

DWELLING UNITS APPROVED, Percentage Change

Month	HOUSES.....		OTHER DWELLINGS(a).....		TOTAL DWELLING UNITS.....		
	Private sector	Total	Private sector	Total	Private sector	Public sector	Total
ORIGINAL (% change from preceding month)							
1997							
January	-5.6	-5.3	17.8	19.3	1.2	28.4	2.2
February	5.4	5.4	23.7	20.0	11.6	-7.7	10.7
March	9.1	10.0	-18.0	-18.8	-1.1	-2.9	-1.2
April	16.5	15.9	5.3	5.3	13.0	-0.2	12.5
May	13.1	12.0	6.6	5.5	11.2	-22.4	10.0
June	-19.4	-18.7	-10.3	-5.7	-16.9	59.6	-15.0
July	9.8	9.7	18.8	11.4	12.5	-37.4	10.2
August	2.8	2.2	5.5	7.3	3.7	10.5	3.8
September	4.2	4.3	-12.7	-12.9	-1.2	-5.7	-1.4
October	-0.4	-0.3	-8.3	-9.0	-2.7	-11.0	-2.9
November	-6.5	-6.2	28.1	27.6	2.8	12.7	3.0
December	-2.1	-2.2	-12.4	-9.8	-5.6	25.1	-4.8
1998							
January	-12.2	-12.2	-4.8	-6.9	-9.9	-29.0	-10.5
February	10.1	10.2	-11.1	-8.8	3.1	28.9	3.9
March	19.3	19.4	18.9	20.3	19.2	32.2	19.6
SEASONALLY ADJUSTED (% change from preceding month)							
1997							
January	0.3	0.5	17.5	14.7	5.3	-5.3	4.8
February	-2.4	-2.2	14.5	13.1	3.1	0.2	2.9
March	11.8	12.1	-14.9	-15.9	2.2	-10.7	1.7
April	-0.5	-0.7	8.8	8.6	2.3	-1.4	2.2
May	9.1	8.4	-20.6	-21.0	-0.3	-25.4	-1.2
June	-13.3	-13.3	20.7	19.0	-4.8	-10.9	-4.9
July	-4.2	-1.8	-3.9	-3.9	-4.1	65.1	-2.5
August	14.0	11.5	14.9	17.6	14.3	-6.0	13.5
September	-3.9	-3.6	-19.7	-15.0	-9.0	39.9	-7.4
October	2.8	3.3	6.2	-1.4	3.7	-35.2	1.8
November	1.6	1.0	28.0	28.1	9.3	3.2	9.1
December	6.7	6.9	-9.9	-6.2	1.1	43.4	2.3
1998							
January	-1.6	-2.0	4.8	-0.6	0.4	-46.0	-1.5
February	-0.8	-0.7	-22.5	-19.6	-7.7	36.4	-6.7
March	4.2	4.1	23.1	24.4	9.2	25.2	9.8
TREND ESTIMATES (% change from preceding month)							
1997							
January	2.8	2.7	2.9	2.0	2.8	-5.5	2.5
February	2.5	2.5	0.7	-0.2	1.9	-6.6	1.5
March	1.7	1.7	-0.7	-1.8	0.9	-9.7	0.5
April	0.7	0.8	-1.0	-1.8	0.2	-7.3	-0.1
May	0.0	0.1	-0.9	-1.3	-0.3	-2.2	-0.3
June	-0.2	-0.1	-1.2	-1.1	-0.5	2.2	-0.4
July	0.2	0.3	-0.1	0.4	0.1	7.0	0.3
August	1.1	1.1	2.2	2.8	1.4	8.2	1.7
September	2.0	2.0	3.1	3.5	2.4	5.4	2.5
October	2.6	2.5	2.6	2.6	2.6	1.2	2.6
November	2.4	2.3	1.6	1.4	2.1	-2.1	2.0
December	1.9	1.8	0.7	0.5	1.5	-2.7	1.4
1998							
January	1.6	1.5	0.0	-0.1	1.1	-0.9	1.0
February	1.2	1.2	-0.7	-0.6	0.6	0.7	0.6
March	1.3	1.2	-0.1	0.1	0.9	0.6	0.9

(a) See Glossary for definition.

VALUE OF BUILDING APPROVED

<i>Month</i>	<i>New residential building</i>	<i>Alterations and additions to residential buildings(a)</i>	<i>Total residential building</i>	<i>Non-residential building</i>	<i>Total building</i>
<i>\$m</i>	<i>\$m</i>	<i>\$m</i>	<i>\$m</i>	<i>\$m</i>	<i>\$m</i>
ORIGINAL					
1997					
January	997.9	187.1	1 185.0	1 027.6	2 212.6
February	1 095.9	205.0	1 300.9	960.2	2 261.1
March	1 083.5	205.1	1 288.6	714.3	2 002.9
April	1 242.5	212.3	1 454.8	823.0	2 277.8
May	1 470.2	229.2	1 699.5	923.0	2 622.5
June	1 161.2	258.8	1 420.0	1 058.8	2 478.8
July	1 313.6	226.8	1 540.4	1 645.3	3 185.7
August	1 449.5	230.0	1 679.4	1 369.0	3 048.5
September	1 355.6	255.9	1 611.4	1 041.4	2 652.9
October	1 338.6	261.3	1 599.9	1 236.7	2 836.6
November	1 390.4	228.0	1 618.4	992.1	2 610.5
December	1 289.3	211.3	1 500.6	1 059.4	2 560.0
1998					
January	1 181.8	238.6	1 420.4	1 035.1	2 455.5
February	1 178.1	240.1	1 418.2	1 165.9	2 584.1
March	1 451.2	256.4	1 707.6	960.1	2 667.7
SEASONALLY ADJUSTED					
1997					
January	1 164.3	220.7	1 391.0	1 069.3	2 465.9
February	1 217.3	228.4	1 450.4	909.3	2 374.4
March	1 209.2	220.1	1 344.3	992.2	2 347.2
April	1 260.2	200.7	1 523.8	896.6	2 268.4
May	1 315.2	215.3	1 476.4	831.1	2 383.1
June	1 200.4	283.7	1 472.8	1 077.5	2 530.6
July	1 104.4	203.3	1 320.9	1 964.3	3 086.0
August	1 433.0	230.8	1 711.7	1 158.0	2 791.1
September	1 216.1	219.9	1 465.0	1 084.4	2 564.7
October	1 305.2	236.9	1 507.9	897.1	2 440.6
November	1 393.1	222.3	1 636.8	992.1	2 661.3
December	1 397.3	243.0	1 655.0	1 191.5	2 868.3
1998					
January	1 425.9	287.4	1 719.2	1 117.3	2 878.4
February	1 308.4	267.5	1 581.9	1 095.4	2 695.3
March	1 449.1	246.0	1 678.7	1 152.1	2 836.8
TREND ESTIMATES					
1997					
January	1 163.9	217.0	1 374.2	1 026.4	2 475.1
February	1 191.7	219.0	1 399.4	959.3	2 387.7
March	1 206.0	221.2	1 412.7	941.7	2 340.5
April	1 211.5	223.8	1 422.1	995.5	2 371.7
May	1 214.6	226.9	1 433.7	1 095.2	2 466.7
June	1 218.6	229.2	1 448.4	1 194.7	2 576.2
July	1 230.5	228.9	1 468.3	1 249.6	2 652.1
August	1 258.1	227.7	1 499.7	1 244.2	2 692.7
September	1 294.0	228.1	1 537.4	1 188.1	2 698.9
October	1 329.4	231.7	1 574.9	1 113.8	2 688.6
November	1 357.0	239.2	1 606.6	1 060.1	2 688.7
December	1 375.3	248.9	1 630.3	1 056.5	2 719.6
1998					
January	1 389.2	256.8	1 649.0	1 085.4	2 766.5
February	1 398.0	262.0	1 659.7	1 122.7	2 809.2
March	1 416.6	266.0	1 680.6	1 147.4	2 846.6

(a) Refer to Explanatory Notes paragraph 12.

VALUE OF BUILDING APPROVED, Percentage Change

Month	New residential building	Alterations and additions to residential buildings(a)	Total residential building	Non-residential building	Total building
ORIGINAL (% change from preceding month)					
1997					
January	3.3	8.0	4.0	6.2	5.0
February	9.8	9.6	9.8	-6.6	2.2
March	-1.1	0.0	-0.9	-25.6	-11.4
April	14.7	3.5	12.9	15.2	13.7
May	18.3	8.0	16.8	12.2	15.1
June	-21.0	12.9	-16.4	14.7	-5.5
July	13.1	-12.3	8.5	55.4	28.5
August	10.3	1.4	9.0	-16.8	-4.3
September	-6.5	11.3	-4.1	-23.9	-13.0
October	-1.3	2.1	-0.7	18.7	6.9
November	3.9	-12.7	1.2	-19.8	-8.0
December	-7.3	-7.3	-7.3	6.8	-1.9
1998					
January	-8.3	12.9	-5.3	-2.3	-4.1
February	-0.3	0.6	-0.2	12.6	5.2
March	23.2	6.8	20.4	-17.7	3.2
SEASONALLY ADJUSTED (% change from preceding month)					
1997					
January	8.9	7.2	8.1	-3.1	1.3
February	4.5	3.5	4.3	-15.0	-3.7
March	-0.7	-3.6	-7.3	9.1	-1.1
April	4.2	-8.8	13.4	-9.6	-3.4
May	4.4	7.3	-3.1	-7.3	5.1
June	-8.7	31.8	-0.2	29.6	6.2
July	-8.0	-28.3	-10.3	82.3	21.9
August	29.7	13.5	29.6	-41.0	-9.6
September	-15.1	-4.7	-14.4	-6.4	-8.1
October	7.3	7.7	2.9	-17.3	-4.8
November	6.7	-6.2	8.5	10.6	9.0
December	0.3	9.3	1.1	20.1	7.8
1998					
January	2.0	18.3	3.9	-6.2	0.4
February	-8.2	-6.9	-8.0	-2.0	-6.4
March	10.8	-8.1	6.1	5.2	5.2
TREND ESTIMATES (% change from preceding month)					
1997					
January	3.4	1.2	2.7	-6.6	-2.8
February	2.4	0.9	1.8	-6.5	-3.5
March	1.2	1.0	0.9	-1.8	-2.0
April	0.5	1.2	0.7	5.7	1.3
May	0.2	1.4	0.8	10.0	4.0
June	0.3	1.0	1.0	9.1	4.4
July	1.0	-0.1	1.4	4.6	2.9
August	2.2	-0.5	2.1	-0.4	1.5
September	2.9	0.2	2.5	-4.5	0.2
October	2.7	1.6	2.4	-6.3	-0.4
November	2.1	3.2	2.0	-4.8	0.0
December	1.4	4.1	1.5	-0.3	1.1
1998					
January	1.0	3.2	1.1	2.7	1.7
February	0.6	2.0	0.7	3.4	1.5
March	1.3	1.5	1.3	2.2	1.3

(a) Refer to Explanatory Notes paragraph 12.

DWELLING UNITS APPROVED, By State

	New South Wales	Victoria	Queensland	South Australia	Western Australia	Tasmania	Northern Territory	Australian Capital Territory
Month	no.	no.	no.	no.	no.	no.	no.	no.
ORIGINAL								
1997								
January	3 767	2 113	2 239	351	1 182	153	120	135
February	3 872	2 516	2 700	472	1 047	153	106	267
March	3 542	2 456	2 846	543	1 216	125	151	122
April	4 272	2 537	2 748	628	1 626	196	234	138
May	5 242	2 676	3 014	620	1 576	147	132	216
June	4 187	2 568	2 546	597	1 254	118	253	54
July	4 189	2 632	3 363	634	1 531	165	137	107
August	4 559	3 220	3 094	568	1 373	136	146	153
September	4 158	3 162	3 491	600	1 328	149	98	83
October	4 180	2 681	3 176	599	1 508	163	242	142
November	4 729	3 247	2 628	552	1 541	128	135	117
December	4 380	2 830	2 813	513	1 412	155	257	94
1998								
January	3 753	2 439	2 935	431	1 155	133	207	88
February	3 536	2 757	2 763	666	1 444	121	188	95
March	4 350	3 546	3 064	738	1 747	125	179	94
SEASONALLY ADJUSTED								
1997								
January	4 191	2 593	2 839	454	1 379	154	n.a.	n.a.
February	4 308	2 563	3 001	509	1 146	155	n.a.	n.a.
March	3 995	2 638	3 033	572	1 406	147	n.a.	n.a.
April	4 326	2 460	2 694	630	1 577	176	n.a.	n.a.
May	4 442	2 502	2 762	618	1 387	152	n.a.	n.a.
June	4 389	2 672	2 524	569	1 208	125	n.a.	n.a.
July	3 744	2 397	2 977	578	1 506	166	n.a.	n.a.
August	4 862	3 215	2 856	502	1 374	138	n.a.	n.a.
September	3 567	3 157	3 264	549	1 226	139	n.a.	n.a.
October	4 111	2 497	3 021	623	1 474	146	n.a.	n.a.
November	4 507	3 265	2 625	515	1 604	132	n.a.	n.a.
December	4 822	2 835	3 153	568	1 503	155	n.a.	n.a.
1998								
January	4 350	3 088	3 855	588	1 380	139	n.a.	n.a.
February	3 920	2 803	3 092	720	1 580	122	n.a.	n.a.
March	4 481	3 304	2 929	710	1 613	119	n.a.	n.a.
TREND ESTIMATES								
1997								
January	4 112	2 418	2 871	494	1 336	158	152	177
February	4 154	2 487	2 869	523	1 352	156	151	173
March	4 133	2 522	2 835	557	1 371	155	158	163
April	4 102	2 549	2 797	582	1 387	154	168	143
May	4 081	2 586	2 788	592	1 389	152	174	124
June	4 062	2 648	2 802	586	1 379	149	173	109
July	4 069	2 735	2 829	572	1 373	146	162	103
August	4 125	2 838	2 884	556	1 376	144	153	108
September	4 205	2 916	2 964	546	1 394	143	153	119
October	4 280	2 955	3 046	550	1 430	143	166	126
November	4 334	2 967	3 112	568	1 465	142	186	128
December	4 369	2 976	3 162	593	1 494	139	208	123
1998								
January	4 381	2 999	3 199	624	1 522	135	223	115
February	4 364	3 026	3 217	656	1 549	131	232	106
March	4 397	3 078	3 199	684	1 575	126	236	99

DWELLING UNITS APPROVED, By State-Percentage Change

Month	New South Wales	Victoria	Queensland	South Australia	Western Australia	Tasmania	Northern Territory	Australian Capital Territory
ORIGINAL (% change from preceding month)								
1997								
January	7.1	5.4	-3.2	-14.4	-4.8	0.0	-2.4	66.7
February	2.8	19.1	20.6	34.5	-11.4	0.0	-11.7	97.8
March	-8.5	-2.4	5.4	15.0	16.1	-18.3	42.5	-54.3
April	20.6	3.3	-3.4	15.7	33.7	56.8	55.0	13.1
May	22.7	5.5	9.7	-1.3	-3.1	-25.0	-43.6	56.5
June	-20.1	-4.0	-15.5	-3.7	-20.4	-19.7	91.7	-75.0
July	0.0	2.5	32.1	6.2	22.1	39.8	-45.8	98.1
August	8.8	22.3	-8.0	-10.4	-10.3	-17.6	6.6	43.0
September	-8.8	-1.8	12.8	5.6	-3.3	9.6	-32.9	-45.8
October	0.5	-15.2	-9.0	-0.2	13.6	9.4	146.9	71.1
November	13.1	21.1	-17.3	-7.8	2.2	-21.5	-44.2	-17.6
December	-7.4	-12.8	7.0	-7.1	-8.4	21.1	90.4	-19.7
1998								
January	-14.3	-13.8	4.3	-16.0	-18.2	-14.2	-19.5	-6.4
February	-5.8	13.0	-5.9	54.5	25.0	-9.0	-9.2	8.0
March	23.0	28.6	10.9	10.8	21.0	3.3	-4.8	-1.1
SEASONALLY ADJUSTED (% change from preceding month)								
1997								
January	5.9	23.5	7.6	0.3	3.2	-1.6	n.a.	n.a.
February	2.8	-1.1	5.7	12.2	-16.9	0.4	n.a.	n.a.
March	-7.2	2.9	1.1	12.3	22.7	-5.0	n.a.	n.a.
April	8.3	-6.7	-11.2	10.2	12.1	19.3	n.a.	n.a.
May	2.7	1.7	2.5	-1.9	-12.1	-13.3	n.a.	n.a.
June	-1.2	6.8	-8.6	-7.9	-12.9	-17.8	n.a.	n.a.
July	-14.7	-10.3	17.9	1.5	24.7	32.8	n.a.	n.a.
August	29.9	34.1	-4.1	-13.0	-8.8	-17.2	n.a.	n.a.
September	-26.6	-1.8	14.3	9.3	-10.8	1.3	n.a.	n.a.
October	15.3	-20.9	-7.4	13.5	20.3	4.6	n.a.	n.a.
November	9.6	30.8	-13.1	-17.4	8.8	-9.4	n.a.	n.a.
December	7.0	-13.2	20.1	10.3	-6.3	17.6	n.a.	n.a.
1998								
January	-9.8	8.9	22.3	3.4	-8.2	-10.8	n.a.	n.a.
February	-9.9	-9.2	-19.8	22.5	14.5	-11.8	n.a.	n.a.
March	14.3	17.9	-5.3	-1.4	2.1	-2.9	n.a.	n.a.
TREND ESTIMATES (% change from preceding month)								
1997								
January	3.1	3.8	0.9	3.2	0.9	-0.8	-4.1	0.5
February	1.0	2.8	-0.1	6.0	1.2	-1.3	-0.2	-1.9
March	-0.5	1.4	-1.2	6.4	1.4	-0.5	4.6	-6.0
April	-0.8	1.1	-1.3	4.5	1.2	-0.9	5.9	-12.1
May	-0.5	1.4	-0.3	1.8	0.2	-1.2	3.9	-13.7
June	-0.5	2.4	0.5	-1.0	-0.7	-2.0	-0.9	-12.1
July	0.2	3.3	1.0	-2.4	-0.5	-2.2	-6.2	-5.6
August	1.4	3.8	1.9	-2.8	0.3	-1.5	-5.6	5.2
September	1.9	2.7	2.8	-1.7	1.3	-0.5	0.4	10.0
October	1.8	1.4	2.8	0.7	2.5	-0.1	8.2	6.5
November	1.3	0.4	2.2	3.2	2.5	-0.8	12.2	1.5
December	0.8	0.3	1.6	4.5	2.0	-2.2	11.7	-4.1
1998								
January	0.3	0.7	1.2	5.1	1.9	-2.8	7.3	-6.8
February	-0.4	0.9	0.6	5.2	1.8	-3.1	3.8	-7.8
March	0.8	1.7	-0.5	4.2	1.7	-3.7	1.8	-6.2

DWELLING UNITS APPROVED, Private and Public Sector: Original

Month	New houses	New other residential building	Alterations and additions to residential buildings	Conversion(a)	Non-residential building(a)	Total dwelling units
PRIVATE SECTOR (Number)						
1994-95	112 467	47 355	(b)3 457	(b)	334	163 613
1995-96	85 803	31 275	(b)1 592	(b)	282	118 952
1996-97	90 788	36 950	853	2 231	461	131 283
1997						
March	7 276	3 072	167	20	37	10 572
April	8 477	3 316	39	91	28	11 951
May	9 584	3 491	37	156	23	13 291
June	7 721	2 614	99	515	98	11 047
July	8 482	3 492	42	56	354	12 426
August	8 713	3 879	48	227	15	12 882
September	9 088	3 321	53	241	20	12 723
October	9 050	3 110	38	165	20	12 383
November	8 463	4 053	52	151	11	12 730
December	8 275	3 598	61	66	20	12 020
1998						
January	7 269	3 185	34	310	35	10 833
February	8 002	2 823	48	279	21	11 173
March	9 547	3 568	58	76	69	13 318
PUBLIC SECTOR (Number)						
1994-95	2 551	4 870	(b)45	(b)	4	7 470
1995-96	1 755	3 862	(b)138	(b)	5	5 760
1996-97	1 768	3 469	73	38	19	5 367
1997						
March	212	205	0	4	8	429
April	200	221	0	4	3	428
May	131	178	0	22	1	332
June	171	315	44	0	0	530
July	179	148	0	0	5	332
August	132	231	0	0	4	367
September	150	196	0	0	0	346
October	157	151	0	0	0	308
November	170	176	0	0	1	347
December	163	270	0	0	1	434
1998						
January	137	171	0	0	0	308
February	160	237	0	0	0	397
March	195	329	1	0	0	525
TOTAL (Number)						
1994-95	115 018	52 225	(b)3 502	(b)	338	171 083
1995-96	87 558	35 137	(b)1 730	(b)	287	124 712
1996-97	92 556	40 419	926	2 269	480	136 650
1997						
March	7 488	3 277	167	24	45	11 001
April	8 677	3 537	39	95	31	12 379
May	9 715	3 669	37	178	24	13 623
June	7 892	2 929	143	515	98	11 577
July	8 661	3 640	42	56	359	12 758
August	8 845	4 110	48	227	19	13 249
September	9 238	3 517	53	241	20	13 069
October	9 207	3 261	38	165	20	12 691
November	8 633	4 229	52	151	12	13 077
December	8 438	3 868	61	66	21	12 454
1998						
January	7 406	3 356	34	310	35	11 141
February	8 162	3 060	48	279	21	11 570
March	9 742	3 897	59	76	69	13 843

(a) See Glossary for definition.

(b) Conversions are included in alterations and additions to residential buildings.

VALUE OF BUILDING APPROVED, Private and Public Sector: **Original**

Month	New houses	New other residential building	Alterations and additions creating dwellings	Alterations and additions not creating dwellings	Conversion(a)	Total residential building	Non-residential building	Total building
PRIVATE SECTOR (\$ million)								
1994-95	10 715.3	4 163.0	(b)291.0	2 103.7	(b)	17 274.2	6 791.4	24 065.8
1995-96	8 641.3	3 017.5	(b)85.5	2 119.7	(b)	13 873.0	7 657.0	21 530.0
1996-97	9 691.0	3 524.6	62.8	2 232.6	203.4	15 714.7	9 209.7	24 924.0
1997								
March	781.3	263.4	14.0	186.6	1.7	1 247.0	528.0	1 775.0
April	908.4	292.9	3.2	196.7	8.3	1 409.5	650.7	2 060.2
May	1 071.7	371.8	3.2	203.1	13.3	1 663.1	621.2	2 284.3
June	838.8	272.9	6.2	185.1	63.0	1 365.9	676.6	2 042.5
July	933.2	353.3	3.1	213.8	6.9	1 510.3	1 132.0	2 642.2
August	946.5	465.2	3.6	204.4	19.1	1 638.8	753.1	2 391.8
September	1 013.9	309.5	3.6	236.5	10.9	1 574.4	827.5	2 401.9
October	988.2	321.9	3.6	231.8	14.5	1 560.0	903.4	2 463.4
November	931.2	431.1	3.8	206.0	14.2	1 586.3	827.4	2 413.7
December	918.7	335.3	5.2	194.1	5.0	1 458.4	866.0	2 324.4
1998								
January	819.4	336.6	2.6	178.9	47.6	1 385.0	739.1	2 124.0
February	885.7	256.4	4.6	200.3	23.6	1 370.6	732.8	2 103.4
March	1 081.7	327.8	4.6	232.9	6.9	1 653.9	543.6	2 197.5
PUBLIC SECTOR (\$ million)								
1994-95	227.1	365.1	(b)2.4	34.7	(b)	629.3	2 823.3	3 452.6
1995-96	171.1	288.6	(b)12.3	55.2	(b)	530.0	3 072.3	3 602.2
1996-97	189.0	276.0	2.0	58.3	2.2	527.3	3 520.3	4 047.6
1997								
March	22.9	15.9	0.0	2.6	0.2	41.7	186.3	228.0
April	23.2	18.0	0.0	4.0	0.1	45.3	172.3	217.6
May	13.0	13.8	0.0	9.4	0.2	36.4	301.8	338.2
June	18.6	30.9	0.9	3.6	0.0	54.0	382.3	436.3
July	16.6	10.6	0.0	3.0	0.0	30.2	513.4	543.5
August	16.3	21.5	0.0	2.9	0.0	40.7	616.0	656.6
September	16.7	15.5	0.0	4.8	0.0	37.0	214.0	251.0
October	17.7	10.8	0.0	11.4	0.0	39.9	333.3	373.2
November	16.0	12.1	0.0	4.0	0.0	32.1	164.7	196.8
December	17.3	17.9	0.0	7.0	0.0	42.1	193.5	235.6
1998								
January	13.8	12.1	0.0	9.5	0.0	35.4	296.0	331.5
February	17.0	18.9	0.0	11.6	0.0	47.6	433.2	480.7
March	19.1	22.5	1.2	10.9	0.0	53.7	416.5	470.2
TOTAL (\$ million)								
1994-95	10 942.4	4 528.1	(b)293.5	2 138.5	(b)	17 903.7	9 614.6	27 518.4
1995-96	8 812.5	3 306.3	(b)97.7	2 174.6	(b)	14 402.8	10 729.2	25 132.0
1996-97	9 880.0	3 800.4	64.7	2 291.0	205.7	16 241.9	12 729.9	28 971.6
1997								
March	804.2	279.3	14.0	189.2	1.9	1 288.6	714.3	2 002.9
April	931.6	310.9	3.2	200.7	8.5	1 454.8	823.0	2 277.8
May	1 084.7	385.6	3.2	212.5	13.5	1 699.5	923.0	2 622.5
June	857.4	303.8	7.1	188.7	63.0	1 420.0	1 058.8	2 478.8
July	949.7	363.9	3.1	216.9	6.9	1 540.4	1 645.3	3 185.7
August	962.8	486.7	3.6	207.3	19.1	1 679.4	1 369.0	3 048.5
September	1 030.6	324.9	3.6	241.3	10.9	1 611.4	1 041.4	2 652.9
October	1 005.9	332.7	3.6	243.2	14.5	1 599.9	1 236.7	2 836.6
November	947.3	443.2	3.8	210.1	14.2	1 618.4	992.1	2 610.5
December	936.1	353.2	5.2	201.1	5.0	1 500.6	1 059.4	2 560.0
1998								
January	833.1	348.6	2.6	188.4	47.6	1 420.4	1 035.1	2 455.5
February	902.7	275.4	4.6	211.9	23.6	1 418.2	1 165.9	2 584.1
March	1 100.8	350.4	5.7	243.8	6.9	1 707.6	960.1	2 667.7

(a) See Glossary for definition.

(b) Conversions are included in alterations and additions creating dwellings.

DWELLING UNITS APPROVED IN NEW RESIDENTIAL BUILDINGS(a), By Type of Dwelling:
Original

NEW OTHER RESIDENTIAL BUILDING.....

Period	New houses	Semi-detached, row or terrace houses, townhouses, etc. of.....			Flats, units or apartments in a building of.....				Total	Total new residential building
		One storey	Two or more storeys	Total	One or two storeys	Three storeys	Four or more storeys	Total		
		NUMBER OF DWELLING UNITS								
1994-95	115 018	19 500	10 237	29 737	7 435	4 879	10 174	22 488	52 225	167 243
1995-96	87 558	12 427	7 499	19 926	4 388	4 027	6 796	15 211	35 137	122 695
1996-97	92 556	10 700	8 920	19 620	4 777	5 464	10 558	20 799	40 419	132 975
1997										
January	6 455	888	904	1 792	540	462	635	1 637	3 429	9 884
February	6 803	1 036	878	1 914	316	512	1 263	2 091	4 005	10 808
March	7 488	822	697	1 519	313	366	1 079	1 758	3 277	10 765
April	8 677	1 064	664	1 728	499	414	896	1 809	3 537	12 214
May	9 715	935	1 018	1 953	251	572	893	1 716	3 669	13 384
June	7 892	639	847	1 486	339	441	663	1 443	2 929	10 821
July	8 661	1 008	928	1 936	448	385	871	1 704	3 640	12 301
August	8 845	945	916	1 861	481	448	1 320	2 249	4 110	12 955
September	9 238	791	712	1 503	379	531	1 104	2 014	3 517	12 755
October	9 207	915	828	1 743	304	622	592	1 518	3 261	12 468
November	8 633	913	783	1 696	454	651	1 428	2 533	4 229	12 862
December	8 438	1 106	916	2 022	414	654	778	1 846	3 868	12 306
1998										
January	7 406	743	580	1 323	355	413	1 265	2 033	3 356	10 762
February	8 162	856	955	1 811	290	522	437	1 249	3 060	11 222
March	9 742	1 227	833	2 060	595	639	603	1 837	3 897	13 639

VALUE (\$ million)

1994-95	10 942.4	1 319.9	890.5	2 210.3	506.5	384.7	1 426.3	2 317.9	4 528.1	15 470.5
1995-96	8 812.5	882.5	656.9	1 539.2	339.3	324.8	1 103.1	1 766.9	3 306.3	12 118.6
1996-97	9 880.0	753.2	809.5	1 562.8	351.4	480.0	1 406.2	2 237.8	3 800.4	13 680.5
1997										
January	683.8	64.9	83.9	148.9	39.6	36.6	89.0	165.2	314.1	997.9
February	725.3	74.8	81.5	156.2	26.3	50.2	137.9	214.4	370.6	1 095.9
March	804.2	57.5	63.5	121.1	24.8	31.8	101.6	158.3	279.3	1 083.5
April	931.6	74.0	58.3	132.3	40.6	31.1	107.0	178.6	310.9	1 242.5
May	1 084.7	68.9	96.8	165.8	17.8	57.7	144.3	219.8	385.6	1 470.2
June	857.4	46.7	76.1	122.8	26.8	41.4	112.8	181.1	303.8	1 161.2
July	949.7	72.1	90.6	162.7	35.5	31.1	134.6	201.2	363.9	1 313.6
August	962.8	70.1	77.0	147.1	43.6	54.3	241.7	339.6	486.7	1 449.5
September	1 030.6	59.6	63.1	122.6	29.3	38.4	134.5	202.3	324.9	1 355.6
October	1 005.9	65.3	69.6	134.9	21.7	52.9	123.1	197.8	332.7	1 338.6
November	947.3	63.9	78.8	142.7	36.8	51.8	211.8	300.5	443.2	1 390.4
December	936.1	70.1	78.7	148.8	37.0	59.6	107.7	204.4	353.2	1 289.3
1998										
January	833.1	53.1	58.9	112.0	25.1	44.8	166.7	236.7	348.6	1 181.8
February	902.7	59.1	88.8	147.9	25.3	50.0	52.2	127.4	275.4	1 178.1
March	1 100.8	90.7	78.0	168.7	53.2	50.0	78.5	181.7	350.4	1 451.2

(a) See Glossary for definition.

VALUE OF BUILDING APPROVED, Average 1989-90 Prices

Period	New houses \$m	New other residential building \$m	New residential building \$m	Alterations and additions to residential buildings(a) \$m	Total residential building \$m	Non-residential building \$m	Total building \$m
ORIGINAL							
1994-95	10 023.6	4 693.6	14 717.2	2 227.6	16 944.7	9 984.6	26 929.3
1995-96	7 948.4	3 361.4	11 309.7	2 055.2	13 364.9	10 965.2	24 330.1
1996-97	8 919.4	3 846.3	12 765.7	2 304.6	15 070.3	12 775.2	27 845.5
1996							
September	2 208.7	935.0	3 143.7	559.5	3 703.2	3 171.3	6 874.5
December	2 108.1	937.3	3 045.3	576.3	3 621.6	4 055.0	7 676.6
1997							
March	2 002.1	973.9	2 976.0	538.7	3 514.7	2 743.3	6 258.1
June	2 600.6	1 000.0	3 600.6	630.1	4 230.7	2 805.6	7 036.3
September	2 660.7	1 156.7	3 817.4	639.9	4 457.3	3 913.4	8 370.6
December	2 598.9	1 105.0	3 703.9	625.2	4 329.1	3 246.9	7 576.0
SEASONALLY ADJUSTED							
1996							
September	2 053.4	871.9	2 888.6	521.6	3 460.4	3 235.8	6 595.8
December	2 111.5	972.9	3 076.4	569.1	3 632.1	3 750.5	7 534.4
1997							
March	2 258.1	1 011.6	3 363.2	603.6	3 897.5	3 016.2	6 945.0
June	2 503.9	1 016.9	3 509.5	629.5	4 137.1	2 805.9	6 848.5
September	2 475.8	1 080.0	3 479.0	587.2	4 149.5	4 059.0	7 951.3
December	2 616.7	1 129.5	3 775.2	626.6	4 403.2	3 042.0	7 541.1
TREND ESTIMATES							
1996							
September	2 038.6	896.6	2 929.1	537.0	3 463.2	3 316.2	6 768.1
December	2 139.9	963.4	3 118.8	567.6	3 666.4	3 317.0	7 030.4
1997							
March	2 282.6	998.2	3 304.7	598.4	3 881.2	3 249.1	7 136.9
June	2 419.6	1 037.7	3 460.6	611.0	4 070.1	3 251.0	7 241.4
September	2 527.2	1 076.3	3 583.3	612.6	4 225.9	3 350.8	7 466.9
December	2 609.1	1 117.6	3 699.3	613.8	4 361.3	3 439.0	7 750.6
TREND ESTIMATES (% change from preceding quarter)							
1996							
September	2.3	11.1	4.6	2.3	4.3	10.4	7.5
December	5.0	7.5	6.5	5.7	5.9	0.0	3.9
1997							
March	6.7	3.6	6.0	5.4	5.9	-2.0	1.5
June	6.0	4.0	4.7	2.1	4.9	0.1	1.5
September	4.4	3.7	3.5	0.3	3.8	3.1	3.1
December	3.2	3.8	3.2	0.2	3.2	2.6	3.8

(a) Refer to Explanatory Notes paragraph 12.

NON-RESIDENTIAL BUILDING APPROVED, Jobs By Value Range: Original

Period	<i>Hotels, motels and other short term accommodation....</i>		Shops.....		Factories.....		Offices.....		<i>Other business premises.....</i>		<i>Educational.....</i>	
	no.	\$m	no.	\$m	no.	\$m	no.	\$m	no.	\$m	no.	\$m
Value—\$50,000—\$199,999												
1998												
January	18	1.7	181	16.9	84	8.7	125	13.2	86	8.0	60	6.3
February	27	2.9	245	22.0	74	8.3	149	14.2	106	9.8	34	3.9
March	20	2.0	274	24.0	68	7.3	176	16.1	140	14.1	38	4.0
Value—\$200,000—\$499,999												
1998												
January	7	2.0	43	13.2	49	14.7	46	13.8	46	14.9	43	14.8
February	12	3.5	56	16.1	55	16.1	60	17.6	56	16.4	25	7.7
March	14	3.9	63	16.8	61	17.3	85	26.3	73	21.8	31	9.2
Value—\$500,000—\$999,999												
1998												
January	3	1.8	18	11.5	23	15.8	23	16.3	30	19.7	17	11.1
February	7	5.2	23	16.1	18	12.1	25	16.4	14	9.6	16	10.8
March	6	3.8	32	21.4	25	15.8	26	17.9	24	16.8	11	8.3
Value—\$1,000,000—\$4,999,999												
1998												
January	8	19.2	11	21.7	15	31.3	16	24.5	25	53.9	17	35.5
February	9	26.1	24	43.4	19	34.4	17	36.9	27	50.0	18	37.7
March	10	18.0	14	24.8	10	17.8	14	24.1	23	42.6	9	24.0
Value—\$5,000,000 and over												
1998												
January	6	119.3	6	100.7	2	18.2	3	39.7	6	65.7	7	51.8
February	4	68.8	3	39.5	1	5.2	3	72.5	5	193.8	4	23.6
March	1	19.5	5	42.9	0	0.0	1	6.2	7	69.1	0	0.0
Value—Total												
1994-95	501	611.1	3 715	1 802.5	2 274	870.0	3 324	1 472.4	2 541	1 158.2	1 478	1 203.1
1995-96	578	657.9	4 098	1 811.3	2 246	989.1	3 461	1 801.3	2 646	1 719.8	1 505	1 255.2
1996-97	665	912.5	4 183	2 180.3	2 313	1 132.5	3 479	2 293.3	2 861	1 627.9	1 528	1 407.5
1998												
January	42	143.9	259	164.0	173	88.7	213	107.6	193	162.2	144	119.5
February	59	106.5	351	137.2	167	76.1	254	157.6	208	279.6	97	83.6
March	51	47.2	388	129.9	164	58.1	302	90.6	267	164.4	89	45.5

NON-RESIDENTIAL BUILDING APPROVED, Jobs By Value Range: **Original** *continued*

Period	Religious.....		Health.....		Entertainment and recreational.....		Miscellaneous.....		Total non- residential building.....	
	no.	\$m	no.	\$m	no.	\$m	no.	\$m	no.	\$m
Value—\$50,000—\$199,999										
1998										
January	7	0.7	25	2.5	32	3.6	44	4.1	662	65.7
February	8	0.7	21	1.9	42	4.4	52	5.6	758	73.8
March	11	1.2	24	2.3	38	4.0	53	4.9	842	79.9
Value—\$200,000—\$499,999										
1998										
January	3	0.8	15	4.4	13	3.8	15	4.7	280	87.2
February	7	2.2	9	2.8	22	7.2	17	4.9	319	94.6
March	8	2.1	14	4.5	30	9.3	26	8.0	405	119.2
Value—\$500,000—\$999,999										
1998										
January	5	3.6	11	7.8	9	6.5	4	2.6	143	96.7
February	2	1.6	5	3.1	17	10.2	5	4.2	132	89.2
March	0	0.0	7	4.0	13	8.7	13	9.9	157	106.7
Value—\$1,000,000—\$4,999,999										
1998										
January	0	0.0	6	11.9	13	30.7	6	16.8	117	245.4
February	2	3.3	16	43.9	7	14.8	12	27.7	151	318.2
March	1	1.2	4	9.8	9	14.1	6	7.4	100	183.8
Value—\$5,000,000 and over										
1998										
January	1	6.7	5	114.9	1	6.7	1	16.5	38	540.3
February	0	0.0	4	27.8	1	7.5	5	151.4	30	590.2
March	0	0.0	6	263.2	2	45.4	2	24.1	24	470.5
Value—Total										
1994-95	208	73.0	578	635.9	1 040	1 167.2	1 105	621.3	16 764	9 614.6
1995-96	205	85.8	661	765.8	1 070	936.7	1 310	706.3	17 780	10 729.2
1996-97	193	56.3	778	982.3	1 143	1 321.2	1 328	816.7	18 471	12 729.9
1998										
January	16	11.8	62	141.4	68	51.3	70	44.7	1 240	1 035.1
February	19	7.9	55	79.5	89	44.2	91	193.8	1 390	1 165.9
March	20	4.5	55	283.9	92	81.6	100	54.3	1 528	960.1

DWELLING UNITS APPROVED, By State: **Original**

<i>State/Territory</i>	<i>New houses</i>	<i>New other residential building</i>	<i>Alterations and additions to residential buildings</i>	<i>Conversion</i>	<i>Non-residential building</i>	<i>Total dwelling units</i>
<i>no.</i>	<i>no.</i>	<i>no.</i>	<i>no.</i>	<i>no.</i>	<i>no.</i>	<i>no.</i>
PRIVATE SECTOR						
New South Wales	2 587	1 576	17	40	2	4 222
Victoria	2 591	822	33	32	19	3 497
Queensland	2 109	799	5	2	44	2 959
South Australia	621	61	0	2	2	686
Western Australia	1 330	248	3	0	1	1 582
Tasmania	116	5	0	0	0	121
Northern Territory	99	57	0	0	1	157
Australian Capital Territory	94	0	0	0	0	94
Australia	9 547	3 568	58	76	69	13 318
PUBLIC SECTOR						
New South Wales	35	92	1	0	0	128
Victoria	31	18	0	0	0	49
Queensland	25	80	0	0	0	105
South Australia	48	4	0	0	0	52
Western Australia	33	132	0	0	0	165
Tasmania	1	3	0	0	0	4
Northern Territory	22	0	0	0	0	22
Australian Capital Territory	0	0	0	0	0	0
Australia	195	329	1	0	0	525
TOTAL						
New South Wales	2 622	1 668	18	40	2	4 350
Victoria	2 622	840	33	32	19	3 546
Queensland	2 134	879	5	2	44	3 064
South Australia	669	65	0	2	2	738
Western Australia	1 363	380	3	0	1	1 747
Tasmania	117	8	0	0	0	125
Northern Territory	121	57	0	0	1	179
Australian Capital Territory	94	0	0	0	0	94
Australia	9 742	3 897	59	76	69	13 843

VALUE OF BUILDING APPROVED, By State: **Original**

<i>State/Territory</i>	<i>New houses</i>	<i>New other residential building</i>	<i>Alterations and additions creating dwellings</i>	<i>Alterations and additions not creating dwellings</i>	<i>Conversion</i>	<i>Total residential building</i>	<i>Non-residential building</i>	<i>Total building</i>
<i>\$m</i>	<i>\$m</i>	<i>\$m</i>	<i>\$m</i>	<i>\$m</i>	<i>\$m</i>	<i>\$m</i>	<i>\$m</i>	<i>\$m</i>
PRIVATE SECTOR								
New South Wales	315.6	162.2	1.5	104.5	3.6	587.4	180.1	767.4
Victoria	297.2	72.4	2.8	69.2	3.2	444.8	129.9	574.8
Queensland	235.2	61.2	0.2	23.5	0.1	320.2	95.6	415.7
South Australia	55.5	4.8	0.0	10.7	0.1	71.0	47.8	118.8
Western Australia	140.4	22.0	0.1	15.9	0.0	178.5	60.2	238.7
Tasmania	11.3	0.3	0.0	3.1	0.0	14.8	10.7	25.4
Northern Territory	13.9	4.9	0.0	1.4	0.0	20.2	13.7	33.8
Australian Capital Territory	12.5	0.0	0.0	4.6	0.0	17.1	5.7	22.8
Australia	1 081.7	327.8	4.6	232.9	6.9	1 653.9	543.6	2 197.5
PUBLIC SECTOR								
New South Wales	4.2	7.8	1.2	1.9	0.0	15.1	206.4	221.5
Victoria	2.4	1.0	0.0	7.9	0.0	11.3	18.6	29.9
Queensland	3.4	6.0	0.0	0.2	0.0	9.6	174.9	184.6
South Australia	3.0	0.3	0.0	0.0	0.0	3.3	6.0	9.3
Western Australia	3.3	7.1	0.0	0.1	0.0	10.5	2.3	12.8
Tasmania	0.1	0.3	0.0	0.1	0.0	0.5	5.2	5.6
Northern Territory	2.8	0.0	0.0	0.7	0.0	3.4	1.3	4.7
Australian Capital Territory	0.0	0.0	0.0	0.0	0.0	0.0	1.9	1.9
Australia	19.1	22.5	1.2	10.9	0.0	53.7	416.5	470.2
TOTAL								
New South Wales	319.8	170.1	2.6	106.4	3.6	602.5	386.4	988.9
Victoria	299.6	73.4	2.8	77.1	3.2	456.2	148.5	604.6
Queensland	238.7	67.1	0.2	23.7	0.1	329.8	270.5	600.3
South Australia	58.4	5.1	0.0	10.7	0.1	74.3	53.8	128.1
Western Australia	143.7	29.1	0.1	16.1	0.0	189.0	62.4	251.4
Tasmania	11.4	0.6	0.0	3.2	0.0	15.2	15.9	31.1
Northern Territory	16.7	4.9	0.0	2.0	0.0	23.6	14.9	38.5
Australian Capital Territory	12.5	0.0	0.0	4.6	0.0	17.1	7.6	24.7
Australia	1 100.8	350.4	5.7	243.8	6.9	1 707.6	960.1	2 667.7

VALUE OF NON-RESIDENTIAL BUILDING APPROVED, By State: **Original**

State/Territory	Hotels, motels and other short term accommodation	Shops	Factories	Offices	Other business premises	Educational	Religious	Health	Entertainment and recreational	Miscellaneous	Total non- residential building
	\$m	\$m	\$m	\$m	\$m	\$m	\$m	\$m	\$m	\$m	\$m
PRIVATE SECTOR											
New South Wales	4.5	39.5	24.9	22.2	53.0	5.8	0.9	14.1	12.0	3.1	180.1
Victoria	8.2	32.4	14.0	24.6	25.6	5.2	1.3	1.5	4.7	12.3	129.9
Queensland	24.8	26.1	5.6	10.2	13.2	5.1	1.5	2.8	4.7	1.6	95.6
South Australia	0.8	9.7	2.3	2.6	28.8	0.9	0.1	0.3	0.6	1.6	47.8
Western Australia	7.6	18.8	9.0	2.2	16.5	1.0	0.3	0.9	3.3	0.7	60.2
Tasmania	0.1	1.5	0.8	0.8	6.9	0.1	0.1	0.1	0.3	0.1	10.7
Northern Territory	0.0	0.7	0.1	2.0	2.4	0.0	0.0	0.0	8.0	0.4	13.7
Australian Capital Territory	1.2	0.7	0.0	1.9	1.5	0.1	0.3	0.0	0.2	0.0	5.7
Australia	47.2	129.4	56.6	66.5	148.0	18.0	4.5	19.6	33.9	19.8	543.6
PUBLIC SECTOR											
New South Wales	0.0	0.1	0.0	18.6	12.2	12.2	0.0	101.4	40.1	21.7	206.4
Victoria	0.0	0.0	0.5	1.6	2.9	3.6	0.0	2.7	3.7	3.5	18.6
Queensland	0.0	0.1	1.0	1.8	0.6	5.9	0.0	158.5	1.1	5.9	174.9
South Australia	0.0	0.0	0.0	0.4	0.0	1.5	0.0	1.5	1.0	1.6	6.0
Western Australia	0.0	0.0	0.0	0.0	0.1	0.0	0.0	0.0	1.3	0.9	2.3
Tasmania	0.0	0.0	0.0	0.6	0.3	3.9	0.0	0.0	0.4	0.0	5.2
Northern Territory	0.0	0.1	0.0	0.1	0.3	0.4	0.0	0.1	0.0	0.2	1.3
Australian Capital Territory	0.0	0.1	0.0	1.2	0.0	0.0	0.0	0.0	0.0	0.7	1.9
Australia	0.0	0.4	1.5	24.2	16.5	27.5	0.0	264.3	47.6	34.5	416.5
TOTAL											
New South Wales	4.5	39.6	24.9	40.8	65.3	17.9	0.9	115.5	52.1	24.9	386.4
Victoria	8.2	32.4	14.5	26.2	28.6	8.8	1.3	4.3	8.5	15.8	148.5
Queensland	24.8	26.2	6.6	12.0	13.9	10.9	1.5	161.3	5.8	7.5	270.5
South Australia	0.8	9.7	2.3	3.0	28.8	2.4	0.1	1.8	1.6	3.2	53.8
Western Australia	7.6	18.8	9.0	2.2	16.6	1.0	0.3	0.9	4.6	1.6	62.4
Tasmania	0.1	1.5	0.8	1.4	7.1	4.0	0.1	0.1	0.8	0.1	15.9
Northern Territory	0.0	0.9	0.1	2.0	2.8	0.4	0.0	0.1	8.0	0.7	14.9
Australian Capital Territory	1.2	0.7	0.0	3.1	1.5	0.1	0.3	0.0	0.2	0.7	7.6
Australia	47.2	129.9	58.1	90.6	164.4	45.5	4.5	283.9	81.6	54.3	960.1

EXPLANATORY NOTES

INTRODUCTION

1 This publication presents monthly details of building work approved.

SCOPE AND COVERAGE

2 Statistics of building work approved are compiled from:

- permits issued by local government authorities;
- contracts let or day labour work authorised by Commonwealth, State, semi-government and local government authorities;
- major building activity in areas not subject to normal administrative approval e.g. building on remote mine sites.

3 The scope of the survey comprises the following activities:

- construction of new buildings
- alterations and additions to existing buildings
- approved non-structural renovation and refurbishment work
- approved installation of integral building fixtures

From July 1990, the statistics include:

- all approved new residential building valued at \$10,000 or more
- approved alterations and additions to residential building valued at \$10,000 or more
- all approved non-residential building jobs valued at \$50,000 or more.

Excluded from the statistics is:

- construction activity not defined as building (e.g. construction of roads, bridges, railways, earthworks, etc.). Statistics for this activity can be found in *Engineering Construction Activity, Australia* (8762.0).

VALUE DATA

4 Value data are derived by aggregation of the estimated value of building work when completed as reported on approval documents. Such value data excludes the value of land and landscaping but includes site preparation. These estimates are usually a reliable indicator of the completed value of 'houses'. However, for 'other residential buildings' and 'non-residential buildings', these estimates can differ significantly from the completed value of the building.

OWNERSHIP

5 Building ownership is classified as either public or private sector and is based on the sector of intended owner of the completed building at the time of approval. Residential buildings constructed by private sector builders under government housing authority schemes are classified as public sector when the authority has contracted, or intends to contract, to purchase the building on or before completion.

BUILDING CLASSIFICATIONS

6 Building approvals are classified both by the Type of Building (e.g. 'house', 'factory') and by the Type of Work involved (e.g. 'new', 'alterations' and 'additions'). These classifications are often used in conjunction with each other to describe building approvals in this publication.

7 The Type of Building classification refers to the intended major function of a building. A building which is ancillary to other buildings or forms a part of a group of related buildings is classified to the function of the building, not to the function of the group as a whole.

8 An example is the treatment of building work approved for a factory complex. For instance, a detached administration building would be classified to Offices, a detached cafeteria building to Shops, while the factory buildings would be classified to Factories.

EXPLANATORY NOTES

BUILDING CLASSIFICATIONS

continued

9 An exception to this rule is the treatment of group accommodation buildings. For example, a student accommodation building on a university campus would be classified to Education.

10 In the case of a large multi-function building, i.e. a single large physical building which, at the time of approval is intended to have more than one purpose (e.g. a hotel/shops/casino project), the ABS endeavours to split the approval details according to each main function.

11 Where this is not possible because separate details cannot be obtained, the building is classified to the predominant function of the building on the basis of the function which represents the highest proportion of the total value of the project.

12 The Type of Work classification refers to the building activity carried out: New; Alterations and additions; or Conversion. See the Glossary for definitions of these terms. Prior to the January 1998 issue of this publication, Conversions were published as part of a category called 'Conversions, etc.'. From the January 1998 issue onwards, Conversion jobs are shown separately in tables 7, 8, 12 and 13. However, in other tables they are included within existing categories, as follows: in tables 1 and 2 they are included in the appropriate Type of Building category, and in tables 3, 4 and 10 they are included in the 'Alterations and additions to residential buildings' category.

SEASONAL ADJUSTMENT

13 Seasonal adjustment is a means of removing the estimated effects of seasonal variation from the series so that the effects of other influences can be more clearly recognised.

14 In the seasonal adjustment of series, account has been taken of both normal seasonal factors and 'trading day' effects arising from the varying numbers of Sundays, Mondays, Tuesdays, etc. in the month. Adjustment has also been made for the influence of Easter which may affect the March and April estimates differently.

15 Seasonal adjustment does not remove from the series the effect of irregular or non-seasonal influences (e.g. the approval of large projects or a change in the administrative arrangements of approving authorities).

16 Some of the component series have been seasonally adjusted independently. Therefore, the adjusted components may not add to the adjusted totals.

17 As happens with all seasonally adjusted series, the seasonal factors are reviewed annually to take account of each additional year's data. The timing of this review may vary and when appropriate will be notified in the 'Data Notes' section of this publication.

EXPLANATORY NOTES

TREND ESTIMATES

18 Smoothing seasonally adjusted series reduces the impact of the irregular component of the seasonally adjusted series and creates trend estimates. For monthly series, these trend estimates are derived by applying a 13-term Henderson-weighted moving average to all months of the respective seasonally adjusted series except the last six months. Trend series are created for the last six months by applying surrogates of the Henderson moving average to the seasonally adjusted series. For the quarterly, constant prices, trend series shown in table 7, the trend estimates are derived by applying a 7-term Henderson-weighted moving average to all quarters of the respective seasonally adjusted series except the last two quarters. Trend series are created for these last three quarters by applying surrogates of the Henderson moving average seasonally adjusted series. For further information, see *A Guide to Interpreting Time Series—Monitoring ‘Trends’: an Overview* (1348.0) or contact the Assistant Director, Time Series Analysis on (02) 6252 6345.

19 While the smoothing techniques described in paragraph 18 enables trend estimates to be produced for the latest few periods, it does result in revisions to the trend estimates as new data becomes available. Generally, revisions become smaller over time and, after three months, usually have a negligible impact on the series. Revisions to the original data and re-analysis of seasonal factors may also lead to revisions to the trend.

CONSTANT PRICE ESTIMATES

20 Constant price estimates measure changes in value after the direct effects of price changes have been eliminated. The deflators used to revalue the current price estimates are derived from the same price data underlying the deflators compiled for the dwelling and non-dwelling construction components of the national accounts aggregate ‘Gross fixed capital expenditure’.

21 Estimates at constant prices are subject to a number of approximations and assumptions. For more information on the nature and concepts of constant price estimates, see Chapter 4 of *Australian National Accounts: Concepts, Sources and Methods* (5216.0). Monthly value data at constant prices are not available.

UNPUBLISHED DATA

22 The ABS can also make available certain building approvals data which are not published. Where the data cannot be provided by telephone, it can be provided via fax, photocopy, computer printout, floppy disk and email. A charge may be made for providing unpublished data in these forms. For details on this consultancy service, please see page 27.

RELATED PUBLICATIONS

23 Users may also wish to refer to the following publications:

- *Building Activity, Australia: Dwelling Unit Commencements* (8750.0)
- *Building Activity, Australia* (8752.0)
- *Engineering Construction Activity, Australia* (8762.0)
- *Housing Finance for Owner Occupation, Australia* (5609.0)
- *Price Index of Materials Used in House Building* (6408.0)
- *Price Index of Materials Used in Building Other than House Building* (6407.0)
- *House Price Indexes: Eight Capital Cities* (6416.0).

ROUNDING

When figures have been rounded, discrepancies may occur between sums of the component items and totals.

SYMBOLS AND OTHER USAGES

— nil or rounded to zero
n.a. not available

G L O S S A R Y

Alterations and additions	Building activity carried out on existing buildings. Includes adding to or diminishing floor area, altering the structural design of a building and affixing rigid components which are integral to the functioning of the building.
Alterations and additions to residential buildings	Alterations and additions carried out on existing residential buildings, which may result in the creation of new dwelling units. See also Explanatory Notes paragraph 12.
Building	A building is a rigid, fixed and permanent structure which has a roof. Its intended purpose is primarily to house people, plant, machinery, vehicles, goods or livestock. An integral feature of a building's design is the provision for regular access by persons in order to satisfy its intended use.
Conversion	Building activity which converts a non-residential building to a residential building, e.g. conversion of a warehouse to residential apartments. Conversion is considered to be a special type of alteration, and these jobs have been separately identified as such from the July 1996 reference month, though they have only appeared separately in this publication from the January 1998 issue. Prior to that issue, conversions were published as part of the 'Conversions, etc.' category or included elsewhere within a table. Prior to July 1996, Table 7 includes the number of Conversions in the 'Alterations and additions to residential buildings' category while Table 8 includes the value of Conversions in the 'Alterations and additions to residential buildings, creating dwellings' category. See also Explanatory Notes paragraph 12.
Dwelling unit	A dwelling unit is a self-contained suite of rooms, including cooking and bathing facilities and intended for long-term residential use. Regardless of whether they are self-contained or not, units within buildings offering institutional care (e.g. hospitals) or temporary accommodation (e.g. motels, hostels and holiday apartments) are not defined as dwelling units. Such units are included in the appropriate category of non-residential building approvals. Dwelling units can be created in one of four ways: through new work to create a residential building; through alteration/addition work to an existing residential building; through either new or alteration/addition work on non-residential building or through conversion of a non-residential building to a residential building.
Educational	Includes schools, colleges, kindergartens, libraries, museums and universities.
Entertainment and recreational	Includes clubs, cinemas, sport and recreation centres.
Factories	Includes paper mills, oil refinery buildings, brickworks and powerhouses.
Flats, units or apartments	Dwellings not having their own private grounds and usually sharing a common entrance, foyer or stairwell.
Health	Includes hospitals, nursing homes, surgeries, clinics and medical centres.
Hotels, motels and other short term accommodation	Includes hostels, boarding houses, guest houses, and holiday apartment buildings.
House	A house is a detached building primarily used for long term residential purposes. It consists of one dwelling unit. For instance, detached 'granny flats' and detached dwelling units (eg. caretakers residences) associated with a non-residential building are defined as houses.

GLOSSARY

Miscellaneous	Includes justice and defence buildings, welfare and charitable homes, prisons and reformatories, maintenance camps, farming and livestock buildings, veterinary clinics, child-minding centres, police stations and public toilets.
New building work	Building activity which will result in the creation of a building which previously did not exist.
New other residential buildings	Building activity which will result in the creation of a residential building other than a house, which previously did not exist.
New residential	Building activity which will result in the creation of any residential building (house or other residential) which previously did not exist.
Non-residential building	A non-residential building is primarily intended for purposes other than long term residential purposes. Note that, on occasions, one or more dwelling units may be created through non-residential building activity. Prior to the January 1998 issue of this publication, they have been included in the 'Conversions, etc.' column in tables showing dwelling units approved. They are now identified separately (e.g. see table 7). However, the value of these dwelling units cannot be separated out from that of the non-residential building which they are part of, therefore the value associated with these remain in the appropriate Non-residential category.
Offices	Includes banks, post offices and council chambers.
Other business premises	Includes warehouses, service stations, transport depots and terminals, electricity substation buildings, telephone exchanges, broadcasting and film studios.
Other dwellings	Includes all dwellings other than new houses. They can be created by: the creation of new other residential buildings (e.g. flats); alteration/addition work to an existing residential building; either new or alteration/addition work on non-residential building; conversion of a non-residential building to a residential building.
Other residential building	An other residential building is a building other than a house primarily used for long-term residential purposes. An other residential building contains more than one dwelling unit. Other residential buildings are coded to the following categories: semi-detached, row or terrace house or townhouse with one storey; semi-detached, row or terrace house or townhouse with two or more storeys; flat, unit or apartment in a building of one or two storeys; flat, unit or apartment in a building of three storeys; flat, unit or apartment in a building of four or more storeys; flat, unit or apartment attached to a house; other/number of storeys unknown. The latter two categories are included with the semi-detached, row or terrace house or townhouse with one storey category in table 9 of this publication.
Religious	Includes convents, churches, temples, mosques, monasteries and noviciates.
Residential building	A residential building is a building consisting of one or more dwelling units. Residential buildings can be either houses or other residential buildings.
Semi-detached, row or terrace houses, townhouses	Dwellings having their own private grounds with no other dwellings above or below.
Shops	Includes retail shops, restaurants, taverns and shopping arcades.

NEED MORE INFORMATION?

INTRODUCTION

The ABS collects detailed building information, of which only a relatively small amount is published. Some of the unpublished data available from just the monthly Building Approvals collection includes:

- material of outer walls, roofs and floors of new houses
- average value of new dwelling units
- floor area of new houses
- information for small geographical regions

We can provide data as printed tables or electronic files (e.g. text, spreadsheets). Our consultants can discuss the availability of data you are interested in and provide you with a quote for supplying information tailored to your needs. It is simply a matter of either contacting them via email, fax or telephone with your data request.

The following example illustrates a potential use of our building approvals data and provides an insight into the type of data and detail available.

CASE STUDY

A carpet retailer wanted to know the 5 Statistical Local Areas (SLAs) in NSW which had the highest number of new houses approved over the latest 12 month period, together with the average value of new houses for each SLA. The purpose was to help determine which areas to target for a marketing campaign.

The ABS provided the company with a table containing the number of new houses approved and their average value for each of the top 5 areas. In addition, it was suggested that another useful data item might be indicative data on average floor area. The client agreed it would be useful to help decide on which areas to concentrate and asked for the State total for NSW to be included for comparison. The data could also be used to help decide which areas to target in view of the locations of their retail outlets. The table provided appears below.

NEW HOUSES APPROVED, Top 5 SLAs In NSW, 12 Months to December 1997

SLA	Houses No.	Average value \$'000	Average floor area(a) sq. metres
Liverpool	2 089	106.2	226.4
Blacktown	1 672	106.7	208.7
Baulkam Hills	1 249	157.7	301.8
Auburn(b)	1 118	129.0	249.4
Wyang	1 080	98.9	n.a.
Total NSW	27 702	119.7	220.3

(a) The average of those house approvals that reported the floor area.

(b) Note that most of these new houses approved are part of the Olympic Games village.

The client was also made aware of the availability of data from the 1996 Census of Population and Housing, which can be used to create a demographic profile of the areas of interest. The data available is extensive and includes distributions by age, income ranges and occupation. This data can be cross tabulated to give a detailed picture of the socio-economic characteristics of the areas of interest and hence influence the marketing approach.

If you would like to discuss your data needs, please contact Tamra Nitschke on (08) 8237 7655 or Tony Bammann on (08) 8237 7316 or fax requests on (08) 8237 7620.

The ABS publishes a wide range of information on Australia's economic and social conditions. A catalogue of publications and products is available from any of our offices (see below).

INFORMATION CONSULTANCY SERVICES

Information tailored to special needs of clients can be obtained from the Information Consultancy Service available at ABS Offices (see below).

ABS PRODUCTS

A large number of ABS products is available from the ABS Bookshops (see below). The ABS also provides a subscription service – you can telephone the ABS Subscription Service Australia wide toll free on 1300 3663 23.

ELECTRONIC SERVICES

A large range of data is available via on-line services, diskette, magnetic tape, tape cartridge and CD ROM. For more details about our electronic data services, contact any ABS office (see below) or e-mail us at:

- client.services@abs.gov.au

GENERAL SALES AND INQUIRIES

- Sydney 02 9268 4611
 - Melbourne 03 9615 7755
 - Brisbane 07 3222 6351
 - Perth 08 9360 5140
 - Adelaide 08 8237 7100
 - Hobart 03 6222 5800
 - Darwin 08 8943 2111
 - Canberra 02 6252 6627
-
- Information Services, ABS
PO Box 10, Belconnen ACT 2616



2873100003985

ISSN 1031-0177

RRP \$17.00